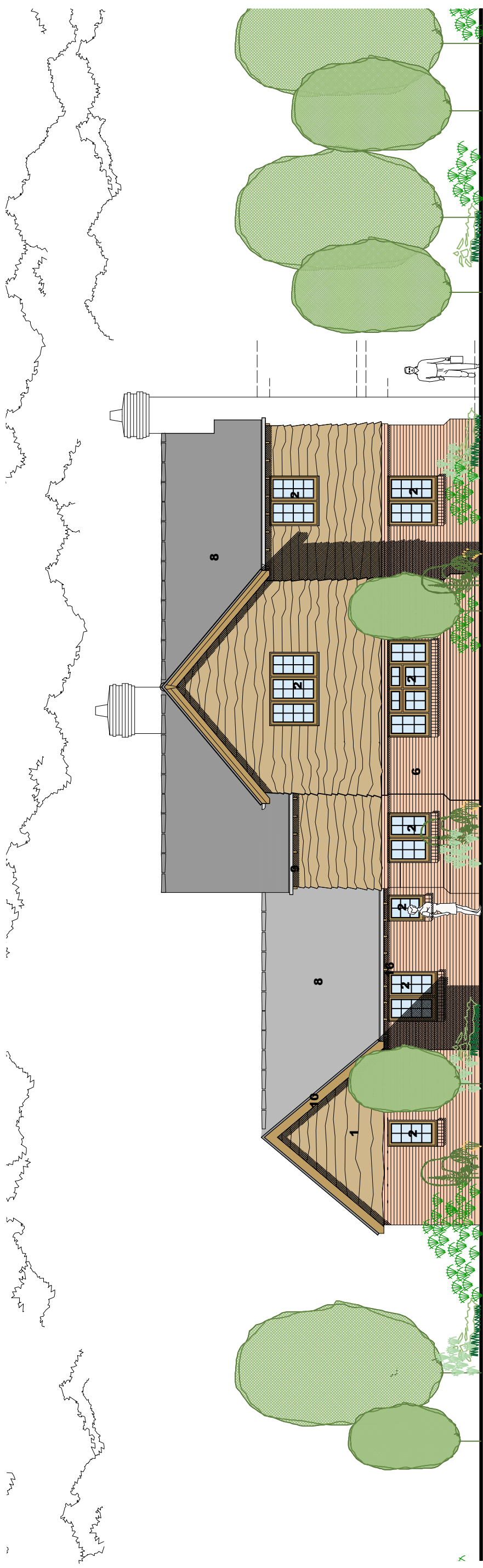
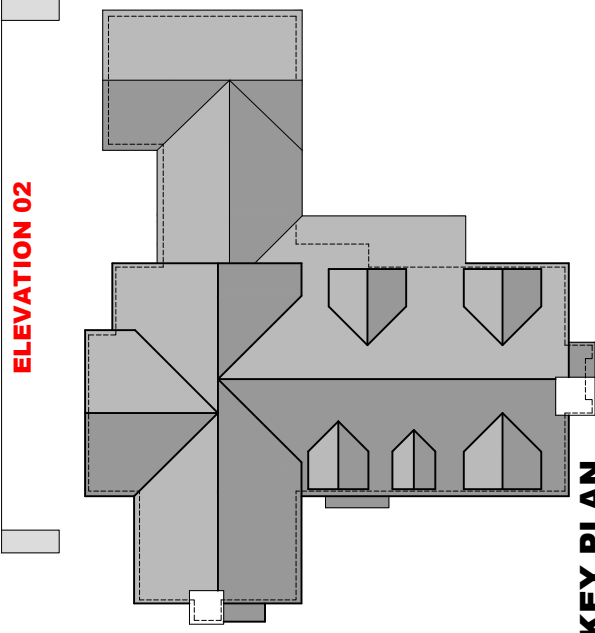


Brackenwood, Romsey Extra

This drawing is copyright and is not to be reproduced. The contractor will be held responsible for the accuracy of works involving the setting out and checking of all dimensions on the drawing and on site. Dimensions must not be scaled from this drawing.



ELEVATION 02



KEY PLAN

MATERIALS KEY:

1. Douglas fir feather edge cladding with a natural wax finish
2. Timber framed double glazed windows
3. Timber boarding around window reveals
4. Timber side door with glazing finished with brushed stainless steel ironmongery
5. Timber garage doors
6. Red brick
7. Rooflight
8. Slate to roof finish
9. Lindab rainwater pipes and guttering
10. Timber fascia board
11. T&G timber boarding to soffit
12. Timber post on staddle stone
13. Timber post on brick plinth
14. Timber entrance door with side lights finished with brushed stainless steel ironmongery
15. Timber framed french doors with side lights
16. Exposed rafter feet

PLANNING

REVISIONS:

DRAWING TITLE:
Elevation 02

PROJECT:
**Proposed redevelopment of: Bracken Wood, Jermyns Lane,
Ampfield, Romsey, Hampshire, SO51 0QA**

SCALE: **1:100@A3** DATE: **Feb 2018** DRAWING No. **P18-001**
DRAWN BY: **NB** CHECKED BY: **NB** **02-05-002**



barclay+phillips
architects

The Studio, 5 Oakridge Office Park, Southampton Road,
Whaddon, Salisbury, SP5 3HT t: +44 (0) 1722 711177
Studio 01, 12 Jordan Street, Baltic Triangle, e: enquiries@barclay-phillips.co.uk
Liverpool, L1 0BP t: +44 (0) 151 9992420 www.barclay-phillips.co.uk